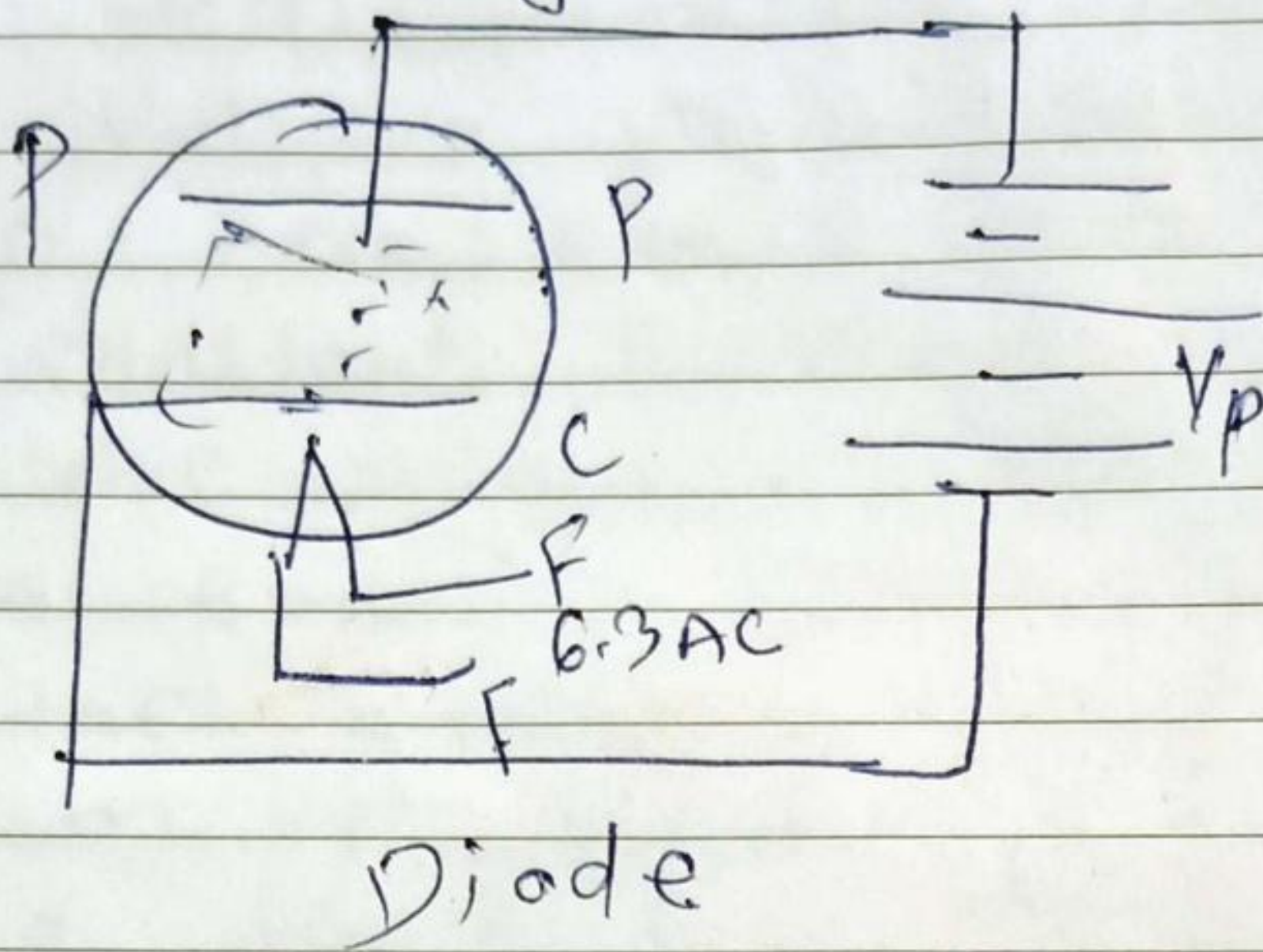


09

Child Langmuir law \rightarrow



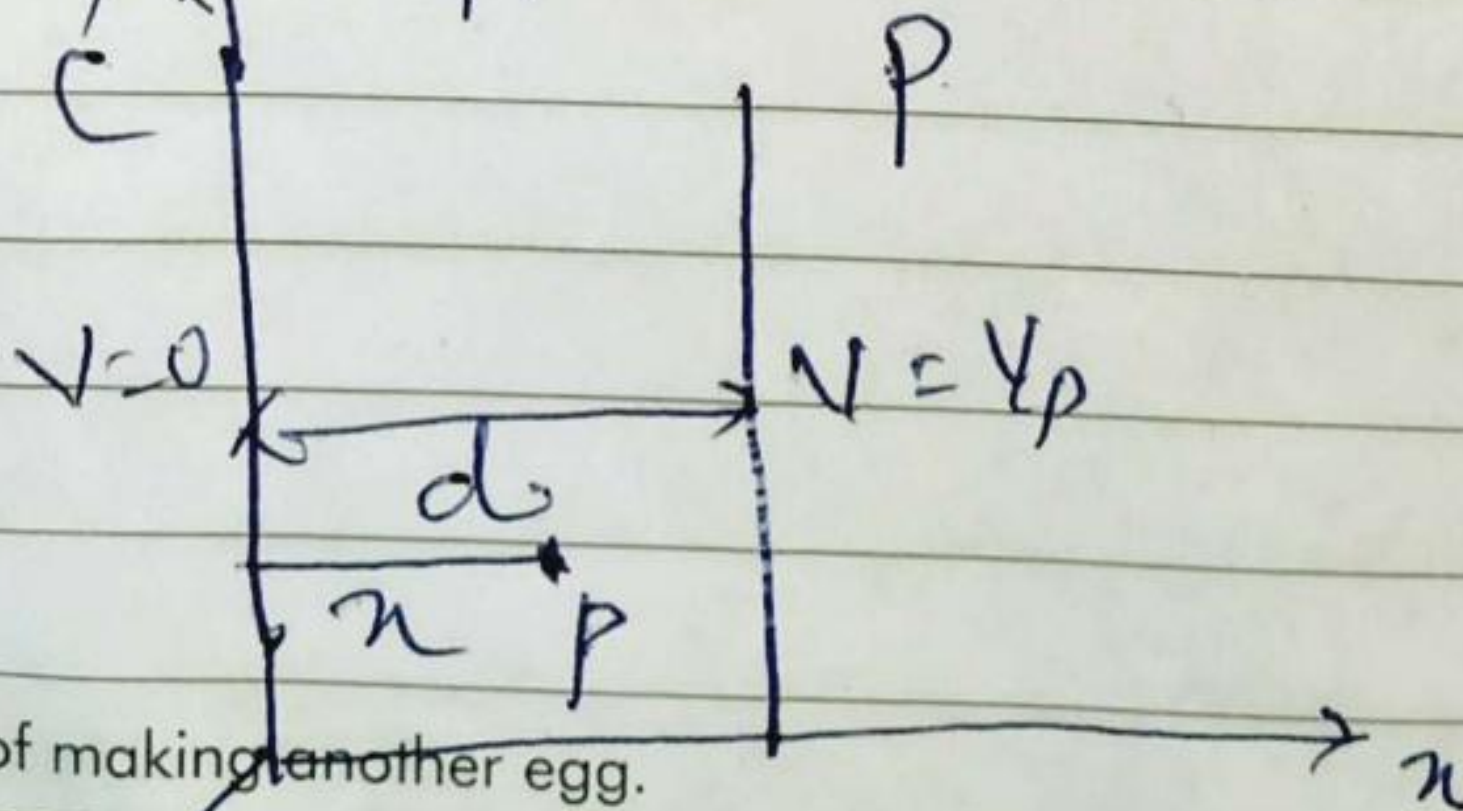
When diode (vacuum) is operated in space charge limited region, the plate current I_p is directly proportional to the three halves power of the plate voltage V_p . i.e.

$$I_p \propto V_p^{3/2}$$

$$I_p = k V_p^{3/2}$$

This is known as Child Langmuir's law

Derivation \rightarrow A diode contains two plates, cathode and anode. V_p plate voltage. Space charge limited region. Cathode is at $x=0$ and plate at $x=d$.



A hen is only an egg's way of making another egg.

January	Su	Mo	Tu	We	Th	Fr	Sa	Su	Mo	Tu	We	Th	Fr	Sa	Su	Mo	Tu	We	Th	Fr	Sa	Su	Mo	Tu							
	1	2	3	4	5	6	7	8	9	10	11	12	13	14	15	16	17	18	19	20	21	22	23	24	25	26	27	28	29	30	31

2

